

RHD8543

Features

- 48 channels provided by three 16-channel multiplexers
- Single power supply operation at +5V
- Radiation performance
 - Total Dose: >1 Mrad(Si), Dose rate = 50-300 rad(Si)/s
 - ELDRS Immune
 - SEL Immune: >100 MeV-cm²/mg
 - Neutron Displacement Damage: >10¹⁴ neutrons/cm²
- Full military temperature range
- Low power consumption < 16.8 mW
- CMOS analog switching allows rail to rail operation and low switch impedance
- One address bus (A0-3) and three enable lines afford flexible organization
- Designed for aerospace and high reliability space applications
- Packaging – Hermetic ceramic
 - 96 leads, 1.320" Sq x 0.200" Ht quad flat pack
 - Weight - 15 grams max
- **Radiation Hardness Assurance Plan: DLA Certified to MIL-PRF-38534, Appendix G.**

General Description

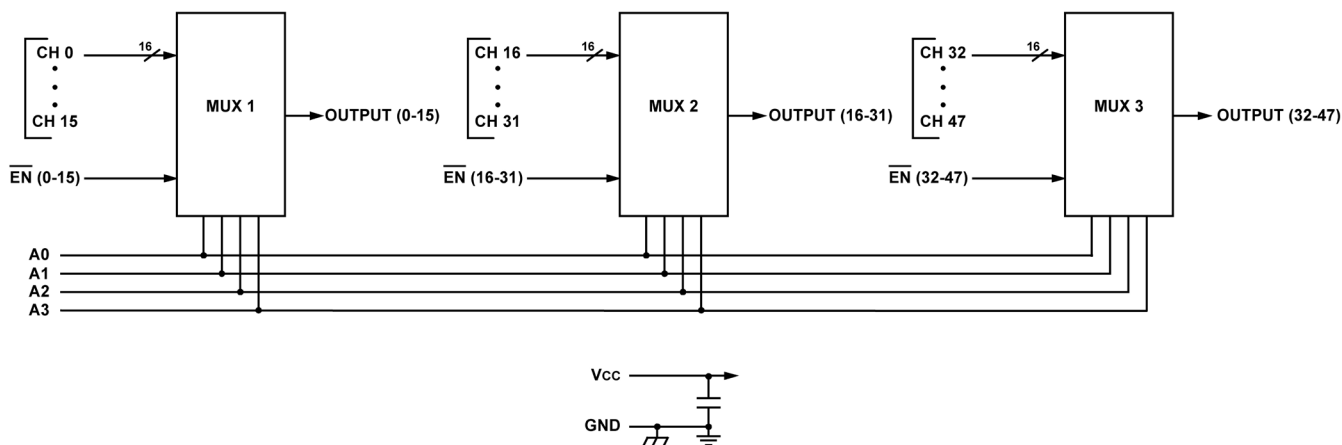
The RHD8543 is a radiation hardened, single supply, 48-Channel Multiplexer MCM (multi-chip module). The RHD8543 design uses specific circuit topology and layout methods to mitigate total ionization dose effects and single event latchup. These characteristics make the RHD8543 especially suited for the harsh environment encountered in Deep Space missions. It is available in a 96 lead High Temperature Co-Fired Ceramic (HTCC) Quad Flatpack (CQFP). It is guaranteed operational from -55°C to +125°C. Available screened in accordance with MIL-PRF-38534 Class K, the RHD8543 is ideal for demanding military and space applications.

Organization and Application

The RHD8543 consists of three, single supply, 16-Channel Multiplexers arranged as shown in the Block Diagram. The Address Bus and three Enable lines provide for 48 channels addressable by bus A(0-3), in three 16-channel blocks, each block enabled separately. Each block connects the addressed channel to one output. The RHD8543 design is inherently radiation tolerant.

The device will not latch with SEU events to above 100 MeV-cm²/mg. Total dose degradation is minimal to above 1 Mrad(Si). Displacement damage environments to neutron fluence equivalents in the mid 10¹⁴ neutrons per cm² range are readily tolerated. There is no sensitivity to low-dose rate (ELDRS) effects. SEU effects are application dependent.

RHD8543



RHD8543 48-Channel Analog MUX Block Diagram

Absolute Maximum Ratings 1/

Parameter	Range	Units
Case Operating Temperature Range	-55 to +125	°C
Storage Temperature Range	-65 to +150	°C
Supply Voltage +V _{CC} (Pin 44)	+7.0	V
Digital Input Overvoltage V _{EN} (Pins 5, 91, 92), V _A (Pins 1, 3, 93, 95)	< V _{CC} +0.4 > GND -0.4	V V
Analog Input Over Voltage V _{IN} (CH0-CH47)	< V _{CC} +0.4 > GND -0.4	V
Input Current	±10	mA

Note:

- 1) All measurements are made with respect to ground.

Notice: Stresses above those listed under 'Absolute Maximum Ratings' may cause permanent damage to the device. These are stress rating only; functional operation beyond the 'Operation Conditions' is not recommended and extended exposure beyond the 'Operation Conditions' may affect device reliability.

Recommended Operating Conditions 1/

Symbol	Parameter	Typical	Units
+V _{CC}	Power Supply Voltage	+5.0	V
V _{ENL} , V _{AL}	Logic Low Level	GND to 30% V _{CC}	V
V _{ENH} , V _{AH}	Logic High Level	70% V _{CC} to V _{CC}	V

RHD8543

DC Electrical Performance Characteristics 1/

(Tc = -55°C To +125°C, +Vcc = +5V - Unless Otherwise Specified)

Parameter	Symbol	Conditions	MIN	MAX	Units	
Supply Current +Vcc	+Icc	$\overline{EN} = 30\% V_{CC}$	0	2.4	mA	
	+ISBY	$\overline{EN} = 70\% V_{CC}$	0	0.6	mA	
Address Input Current A(0-3), <u>7/</u>	IAL(0-3)A	VA = 30% VCC	+25°C	-15	15	nA
			+125°C	-150	150	nA
	IAH(0-3)A	VA = 70% VCC	+25°C	-15	15	nA
			+125°C	-150	150	nA
Enable Input Current \overline{EN}	IENL(0-15) IENL(16-31) IENL(32-47)	VEN(0-15) = 30% VCC	+25°C	-5	5	nA
			+125°C	-50	50	nA
	IENH(0-15) IENH(16-31) IENH(32-47)	VEN(0-15) = 70% VCC	+25°C	-5	5	nA
			+125°C	-50	50	nA

DC Electrical Performance Characteristics 1/ (Continued)

(Tc = -55°C to +125°C, +Vcc= +5V - Unless Otherwise Specified)

Parameter	Symbol	Conditions	MIN	MAX	Units	
High Input Leakage Current (CH0-CH47)	IINLK5	VIN = +5V, VEN = 80% VCC, Output and all unused MUX inputs under test = 0V	+25°C	-5	5	nA
			+125°C	-50	50	nA
Low Input Leakage Current (CH0-CH47)	IINLK0	VIN = 0V, VEN = 80% VCC, Output and all unused MUX inputs under test = +5V	+25°C	-5	5	nA
			+125°C	-50	50	nA
Output Leakage Current VOUT (pins 25, 68 & 70)	IOUTLK	VOUT = +5V, VEN = 80% VCC, All inputs grounded except channel being tested. <u>3/</u> , <u>4/</u>	+25°C	-5	5	nA
			+125°C	-50	50	nA
Switch ON Resistance OUTPUTS (pins 25, 68 & 70)	RDS(ON)	VIN = 0V, VEN = 30% VCC, IOUT = +1mA VIN = +2.5V, VEN = 30% VCC, IOUT = -0.6mA VIN = +5V, VEN = 30% VCC, IOUT = -1mA <u>2/</u> , <u>3/</u> , <u>5/</u> , <u>6/</u>	-55°C	-	500	Ω
			+25°C	-	750	Ω
			+125 °C	-	1000	Ω

Notes:

- 1) Measure inputs sequentially. Ground all unused inputs of the device under test. VA is the applied input voltage to the address lines A(0-3).
- 2) VIN is the applied input voltage to the input channels (CH0-CH47).
- 3) VEN is the applied input voltage to the enable lines \overline{EN} (0-15), \overline{EN} (16-31) and \overline{EN} (32-47).
- 4) VOUT is the applied input voltage to the output lines OUTPUT(0-15), OUTPUT(16-31) and OUTPUT(32-47),
- 5) Negative current is the current flowing out of each of the MUX pins. Positive current is the current flowing into each MUX pin.
- 6) The RHD8543 cannot be operated with analog inputs below 0 volts.
- 7) For these signals, the leakage current is the sum of the individual leakage currents.

RHD8543

Switching Characteristics

(T_c = -55°C to +125°C, +V_{CC} = +5V - Unless otherwise specified)

Parameter	Symbol	Conditions	TEMP	MIN	MAX	Units
Address to Output Delay	t _{AHL}	V _{OUT} High to Low Transition	-55°C	10	150	ns
			+25°C	10	150	ns
			+125°C	10	200	ns
	t _{ALH}	V _{OUT} Low to High Transition	-55°C	10	150	ns
			+25°C	10	150	ns
			+125°C	10	200	ns
Enable to Output Delay	t _{ONEN}	V _{EN} = 30% V _{CC} (Enabled)	-55°C	10	150	ns
			+25°C	10	150	ns
			+125°C	10	200	ns
	t _{OFFEN}	V _{EN} = 70% V _{CC} (Disabled)	ALL	10	200	ns

RHD8543

Truth Table (CH0 – CH15)

A3	A2	A1	A0	$\overline{EN}(0-15)$	"ON" CHANNEL <u>1</u> /
X	X	X	X	H	NONE
L	L	L	L	L	CH0
L	L	L	H	L	CH1
L	L	H	L	L	CH2
L	L	H	H	L	CH3
L	H	L	L	L	CH4
L	H	L	H	L	CH5
L	H	H	L	L	CH6
L	H	H	H	L	CH7
H	L	L	L	L	CH8
H	L	L	H	L	CH9
H	L	H	L	L	CH10
H	L	H	H	L	CH11
H	H	L	L	L	CH12
H	H	L	H	L	CH13
H	H	H	L	L	CH14
H	H	H	H	L	CH15

1/ Between (CH0-CH15) and OUTPUT(0-15)

Truth Table (CH16 – CH31)

A3	A2	A1	A0	$\overline{EN}(16-31)$	"ON" CHANNEL <u>2</u> /
X	X	X	X	H	NONE
L	L	L	L	L	CH16
L	L	L	H	L	CH17
L	L	H	L	L	CH18
L	L	H	H	L	CH19
L	H	L	L	L	CH20
L	H	L	H	L	CH21
L	H	H	L	L	CH22
L	H	H	H	L	CH23
H	L	L	L	L	CH24
H	L	L	H	L	CH25
H	L	H	L	L	CH26
H	L	H	H	L	CH27
H	H	L	L	L	CH28
H	H	L	H	L	CH29
H	H	H	L	L	CH30
H	H	H	H	L	CH31

2/ Between (CH16-CH31) and OUTPUT (16-31)

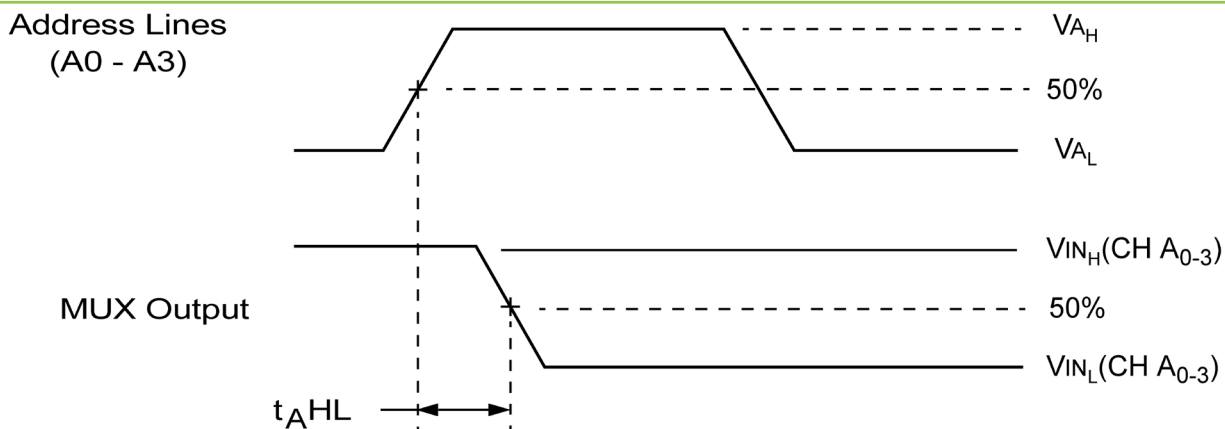
RHD8543

Truth Table (CH32 – CH47)

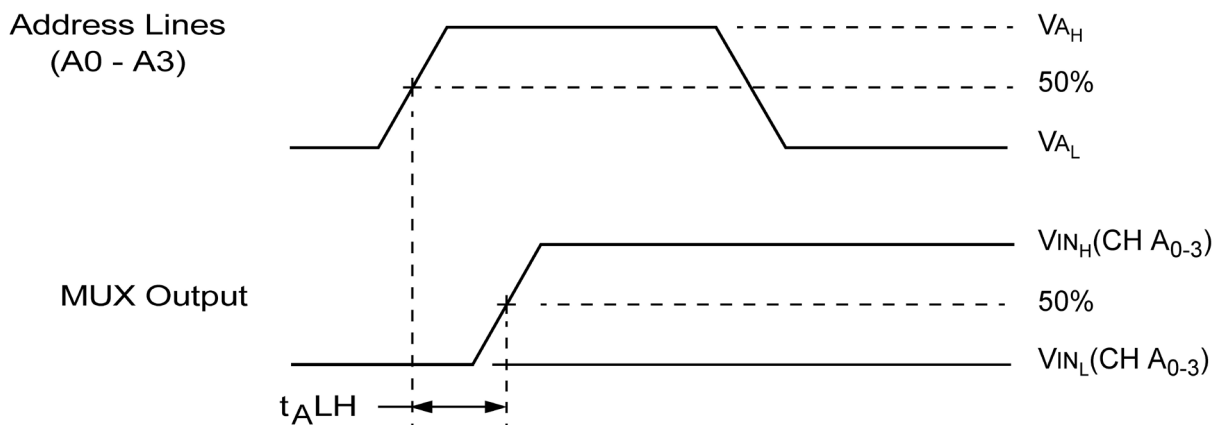
A3	A2	A1	A0	$\overline{EN}(32-47)$	"ON" CHANNEL <u>3</u> /
X	X	X	X	H	NONE
L	L	L	L	L	CH32
L	L	L	H	L	CH33
L	L	H	L	L	CH34
L	L	H	H	L	CH35
L	H	L	L	L	CH36
L	H	L	H	L	CH37
L	H	H	L	L	CH38
L	H	H	H	L	CH39
H	L	L	L	L	CH40
H	L	L	H	L	CH41
H	L	H	L	L	CH42
H	L	H	H	L	CH43
H	H	L	L	L	CH44
H	H	L	H	L	CH45
H	H	H	L	L	CH46
H	H	H	H	L	CH47

3/ Between (CH32-CH47) and OUTPUT (32-47)

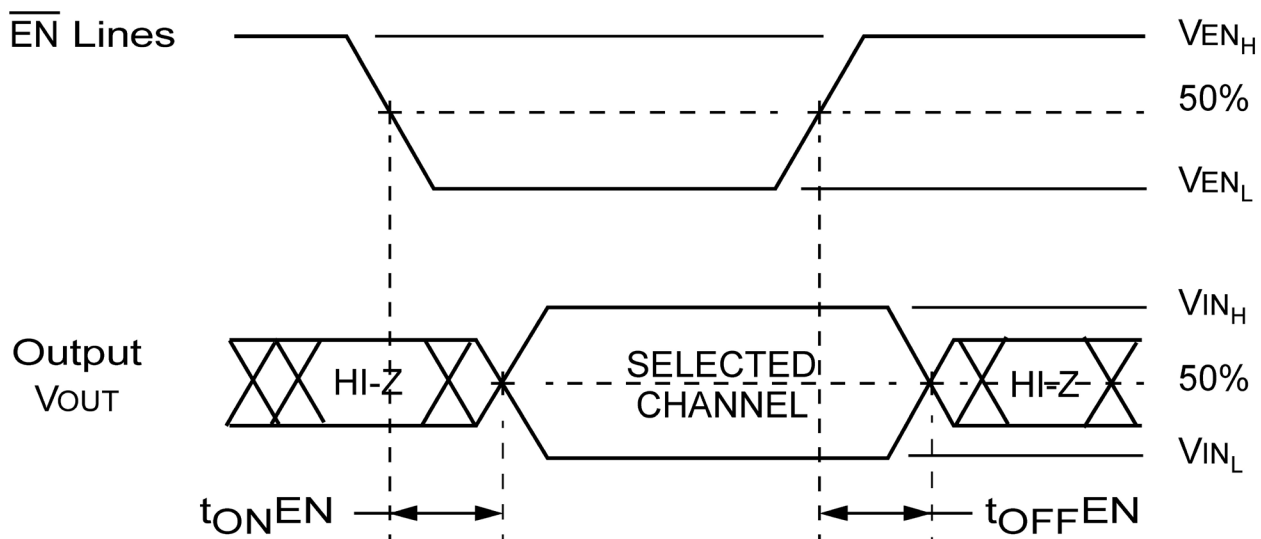
RHD8543



Definition of t_{AHL}



Definition of t_{ALH}



Definition of t_{ONEN} and t_{OFFEN}
RHD8543 Switching Diagrams

Note:

1) $f = 10\text{KHz}$, Duty cycle = 50%.

RHD8543

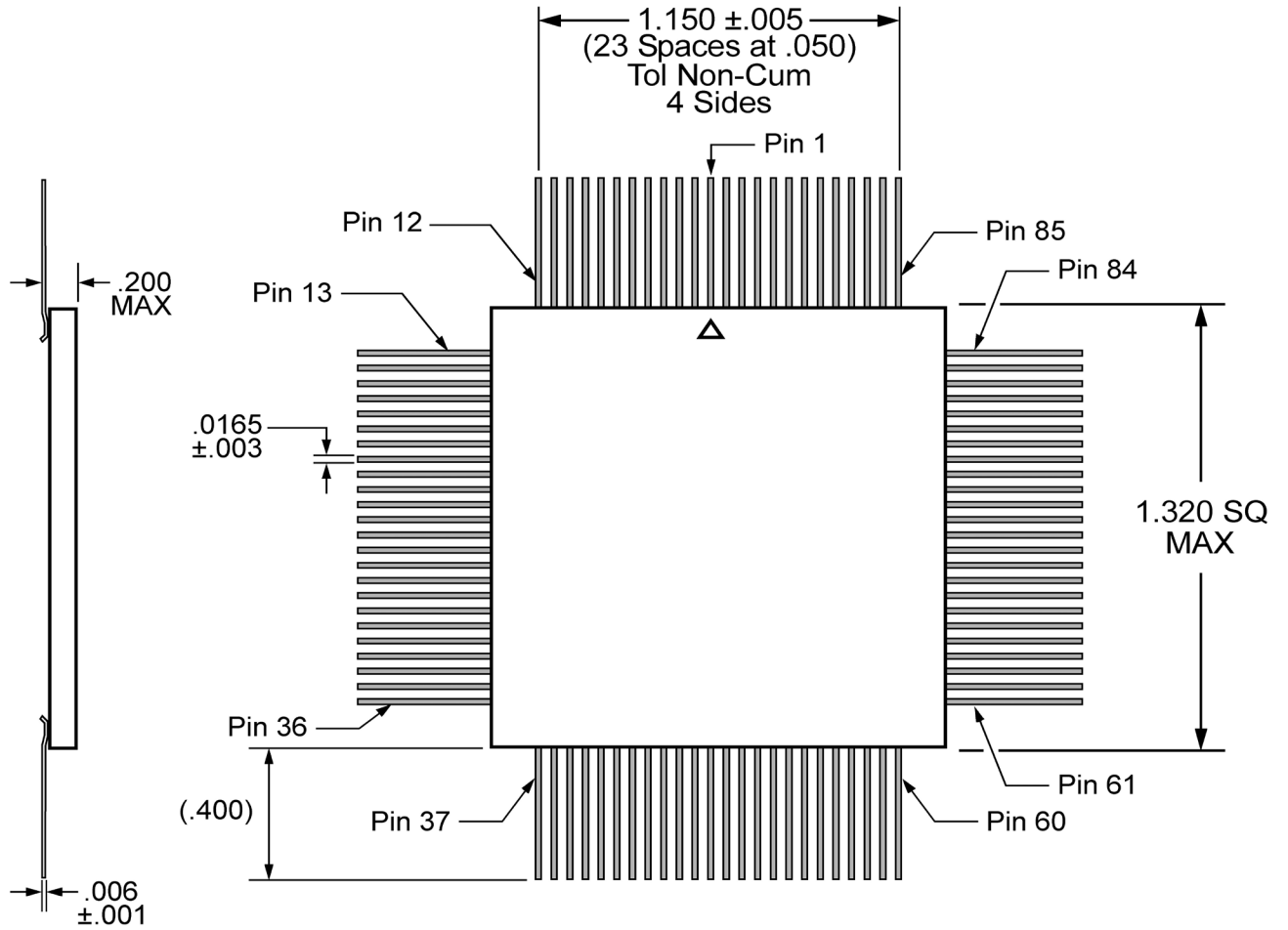
Pin Numbers & Functions

RHD8543 – 96 Leads Ceramic QUAD Flat Pack					
Pin #	Function	Pin #	Function	Pin #	Function
1	A2	33	CH11	65	CH33
2	NC	34	NC	66	CH32
3	A3	35	CH12	67	NC
4	NC	36	NC	68	Output V(32-47)
5	\overline{EN} 0-15	37	CH13	69	NC
6	NC	38	NC	70	Output V(16-31)
7	CH0	39	CH14	71	GND
8	NC	40	NC	72	GND
9	CH1	41	CH15	73	CH31
10	NC	42	NC	74	CH30
11	CH2	43	NC	75	CH29
12	NC	44	+V _{cc}	76	CH28
13	CH3	45	NC	77	CH27
14	NC	46	NC	78	CH26
15	CH4	47	NC	79	CH25
16	NC	48	NC	80	CH24
17	CH5	49	NC	81	CH23
18	NC	50	CASE GND	82	CH22
19	CH6	51	CH47	83	CH21
20	NC	52	CH46	84	CH20
21	CH7	53	CH45	85	CH19
22	NC	54	CH44	86	CH18
23	GND	55	CH43	87	CH17
24	GND	56	CH42	88	CH16
25	Output V(0-15)	57	CH41	89	GND
26	NC	58	CH40	90	GND
27	CH8	59	CH39	91	\overline{EN} 32-47
28	NC	60	CH38	92	\overline{EN} 16-31
29	CH9	61	CH37	93	A0
30	NC	62	CH36	94	NC
31	CH10	63	CH35	95	A1
32	NC	64	CH34	96	NC

Note:

- 1) It is recommended that all "NC" or "no connect" pins be grounded. This eliminates or minimizes any ESD or static buildup.

RHD8543



Flat Package Outline

Note:

- 1) Outside ceramic tie bars not shown for clarity. Contact factory for details.

RHD8543

Ordering Information

Model Number	DLA SMD #	Screening	Package
RHD8543-7	-	Commercial Flow, +25°C testing only	QUAD Flat Pack
RHD8543-S	-	Military Temperature, -55°C to +125°C Screened in accordance with the individual Test Methods of MIL-STD-883 for Space Applications	
RHD8543-201-1S	5962-1221002KXC	In accordance with DLA SMD	
RHD8543-901-1S	5962H1221002KXC	In accordance with DLA Certified RHA Program Plan to RHA Level "H", 1 Mrad(Si)	

Revision History

Date	Revision	Change Description
03/30/2016	B	Import into CAES format
5/23/2017	C	Change status to Datasheet, Remove 3.3V references, Remove the resistor in the V _{CC} line, Add Max Input Current, Typical ranges in Recommended table, Change Input and Output leakage current conditions to V _{EN} = 80% V _{CC} , Add note 7/, Update switching diagram



RHD8543

Datasheet Definitions

	DEFINITION
Advanced Datasheet	CAES reserves the right to make changes to any products and services described herein at any time without notice. The product is still in the development stage and the datasheet is subject to change . Specifications can be TBD and the part package and pinout are not final .
Preliminary Datasheet	CAES reserves the right to make changes to any products and services described herein at any time without notice. The product is in the characterization stage and prototypes are available.
Datasheet	Product is in production and any changes to the product and services described herein will follow a formal customer notification process for form, fit or function changes.

The following United States (U.S.) Department of Commerce statement shall be applicable if these commodities, technology, or software are exported from the U.S.: These commodities, technology, or software were exported from the United States in accordance with the Export Administration Regulations. Diversion contrary to U.S. law is prohibited.

Cobham Long Island Inc. d/b/a Cobham Advanced Electronic Solutions (CAES) reserves the right to make changes to any products and services described herein at any time without notice. Consult an authorized sales representative to verify that the information in this data sheet is current before using this product. The company does not assume any responsibility or liability arising out of the application or use of any product or service described herein, except as expressly agreed to in writing; nor does the purchase, lease, or use of a product or service convey a license under any patent rights, copyrights, trademark rights, or any other of the intellectual rights of the company or of third parties.